



**Big Science, Inc.**  
P. O. Box 995  
Huntersville, NC 28070-0995

[Sales@ScienceGear.com](mailto:Sales@ScienceGear.com)

Phone: 704-992-6521 • Fax: 800-747-7486

**MINIMUM ORDER - \$50**  
**NOTE: Shipping Not Included.**

July 2009 rev. 1

**PTFE & PFA Fluoropolymer Labware****PTFE BOTTLES**

Part No.	Volume (ml)	Height (mm)	I.D. (mm)	Mouth Diam. (mm)	Quantity	Price
CON2716BOT	1	27	16	10	1	\$20
CON3420BOT	3	34	20	10	1	\$20
CON3522BOT	5	35	22	10	1	\$23
CON5026BOT	10	50	26	12	1	\$30
CON6133BOT	25	61	33	19	1	\$35
CON7643BOT	50	76	43	25	1	\$40
CON8852BOT	100	88	52	35	1	\$55
CON9060BOT	150	90	60	35	1	\$65
CON11567BOT	250	115	67	42	1	\$90
CON15080BOT	500	150	80	52	1	\$110
CON185100BOT	1000	185	100	57	1	\$155
CON240120BOT	2000	240	120	60	1	\$225

**PTFE JARS**

Part No.	Volume (ml)	Height (mm)	Cap Diam. (mm)	Quantity	Price
CON3434JAR	15	34	34	1	\$20
CON6234JAR	30	62	34	1	\$20
CON4660JAR	60	46	60	1	\$30
CON6272JAR	120	62	72	1	\$35
CON10072JAR	240	100	72	1	\$50
CON9590JAR	360	95	90	1	\$65
CON12590JAR	480	125	90	1	\$75
CON160110JAR	1000	160	110	1	\$125
CON260134JAR	2200	260	134	1	\$250

**PFA WIDE-MOUTH JARS**

Part No.	Volume (ml)	Height (mm)	Cap Diam. (mm)	Quantity	Price
TJ-60	60	47	59	1	\$40.00
TJ-90	90	66	59	1	\$45.00
TJ-120	120	53	76	1	\$60.00
TJ-180	180	76	76	1	\$70.00
TJ-240	240	94	76	1	\$80.00
TJ-300	300	76	95	1	\$90.00
TJ-360	360	88	95	1	\$100.00

(PFA WIDE-MOUTH JARS con't.)

TJ-480	480	112	95	1	\$110.00
TJ-500	500	115	95	1	\$125.00
TJ-1000	1000	152	117	1	\$180.00
TJ-2000	2000	268	117	1	\$285.00

#### PTFE EVAPORATING DISHES - TALL FORM WITH SPOUT

Part No.	Volume (ml)	Height (mm)	Diameter (mm)	Quantity	Price
CON3438ETS	25	34	38	1	\$15
CON5040ETS	50	50	40	1	\$15
CON5064ETS	100	50	64	1	\$20
CON4378ETS	150	43	78	1	\$25
CON5080ETS	180	50	80	1	\$28
CON5097ETS	250	50	97	1	\$40
CON60100ETS	350	60	100	1	\$50



#### PTFE EVAPORATING DISHES - FLAT FORM

Part No.	Volume (ml)	Height (mm)	Diameter (mm)	Quantity	Price
CON2542EFF	25	25	42	1	\$15
CON2060EFF	50	20	60	1	\$17
CON2880EFF	100	28	80	1	\$20
CON4678EFF	180	46	78	1	\$30
CON55100EFF	350	55	100	1	\$50



#### PTFE EVAPORATING DISHES - FLAT FORM WITH SPOUT

Part No.	Volume (ml)	Height (mm)	Diameter (mm)	Quantity	Price
CON1265EFS	25	12	65	1	\$15
CON1582EFS	50	15	82	1	\$20
CON20102EFS	100	20	102	1	\$25
CON22130EFS	180	22	130	1	\$33
CON36132EFS	350	36	132	1	\$50
CON40136EFS	400	40	136	1	\$55



#### PFA EVAPORATING DISHES

Part No.	Volume (ml)	Quantity	Price
TED 100	100	1	\$20



### PTFE CRUCIBLES



Part No.	Volume (ml)	Height (mm)	O.D. (mm)	Quantity	Price
CON1627CRU	5	16	27	1	\$8
CON2644CRU	25	26	44	1	\$12
CON4156CRU	75	41	56	1	\$20
CON4560CRU	100	45	60	1	\$32

### PTFE DROPPING BOTTLES



Part No.	Volume (ml)	Height (mm)	Cap. Diam. (mm)	Quantity	Price
CON-25-DROP	25	80	33	1	\$40
CON-50-DROP	50	100	43	1	\$50

### PTFE VIALS



Part No.	Volume (ml)	Height (mm)	Cap. Diam. (mm)	Quantity	Price
CON-25-VIAL	25	64	34	1	\$40
CON-50-VIAL	50	78	43	1	\$50

### PTFE CENTRIFUGE TUBES W. CAP (ROUND BOTTOM)

Part No.	Volume (ml)	Height (mm)	OUTER Diam. (mm)	Quantity	Price
CON-08100-CTR	8	100	12	1	\$22
CON-17100-CTR	17	100	18	1	\$26
CON-50140-CTR	50	140	25	1	\$33

### PTFE CENTRIFUGE TUBES W. CAP (CONICAL BOTTOM)

Part No.	Volume (ml)	Height (mm)	OUTER Diam. (mm)	Quantity	Price
CON-13110-CTC	13	110	16	1	\$27
CON-18120-CTC	18	120	18	1	\$32
CON-45150-CTC	45	480	25	1	\$40

### PTFE TEST TUBES (ROUND BOTTOM & LIP)



Part No.	Volume (ml)	Height (mm)	OUTER Diam. (mm)	Quantity	Price
CON-08100-TTR	8	100	12	1	\$15
CON-13100-TTR	13	100	16	1	\$15
CON-17100-TTR	17	100	18	1	\$15
CON-50145-TTR	50	145	25	1	\$25
CON-85100-TTR	85	100	40	1	\$30

**PTFE TEST TUBES (CONICAL BOTTOM & LIP)**

Part No.	Volume (ml)	Height (mm)	OUTER Diam. (mm)	Quantity	Price
CON-13110-TTC	13	110	16	1	\$15
CON-18120-TTC	18	120	18	1	\$20
CON-45150-TTC	45	150	25	1	\$30

**PTFE TEST TUBES RACKS**

Part No.	Holes (ml)	Diam. (mm)	Height (mm)	Quantity	Price
CON-2708-RAK	27	8	45	1	\$60
CON-2113-RAK	21	13	60	1	\$60
CON-1019-RAK	10	19	70	1	\$60
CON-0430-RAK	4	30	80	1	\$60

**PTFE DIPPERS ( w. 24in. shaft)**

Part No.	Volume (ml)	Fluid Oz.	Body Diam. (mm)	Quantity	Price
CON-100-DIP	100	3	54	1	\$95
CON-250-DIP	250	8	66	1	\$110
CON-500-DIP	500	17	80	1	\$130
CON-1K-DIP	1000	34	100	1	\$165

**PTFE LADLE**

Part No.	Volume (ml)	Quantity	Price
CON-10-LAD	10	1	\$35

**PTFE MICRO-TITRE PLATES**

Part No.	Wells	Diam. (mm)	Vol.	Quantity	Price
CON-9664-MTR	96 Round	6.4	350 microliter	1	\$100
CON-9664-MTS	96 Square	6.4	350 microliter	1	\$100
CON-9608-MTR	96 Round	8	2 ml	1	\$185

**PTFE TWEEZERS / FORCEPS (SQUARE ENDED)**

Part No.	Length (mm)	Quantity	Price
CON-100-TSQ	100	1	\$27
CON-150-TSQ	150	1	\$33
CON-200-TSQ	200	1	\$37



### PTFE TWEEZERS / FORCEPS (SHARP ENDED)



Part No.	Length (mm)	Quantity	Price
CON-100-TSH	100	1	\$27
CON-150-TSH	150	1	\$33
CON-200-TSH	200	1	\$37

### PFA Fluoropolymer Volumetric Flasks



Part No.	Volume (ml)	Height (inches)	Quantity	Price
TVF-25	25	2.7	1	\$100.00
TVF-50	50	5.9	1	\$120.00
TVF-100	100	7.1	1	\$140.00
TVF-250	250	9.25	1	\$185.00
TVF-500	500	10.6	1	\$200.00

### PTFE SCOOP



Part No.	Depth (mm)	Width (mm)	Length (mm)	Quantity	Price
CON-20-SCOOP	20	30	80	1	\$25

### PTFE Buchner Funnel



Part No.	Diameter (mm)	Quantity	Price
TBF-95	95	1	\$225.00

### PFA Syringe



Part No.	Volume (ml)	Quantity	Price
TS-4020	20	1	\$125

### Thin PTFE Sleeves for Glass Joints (A' Length Cone - USA-sizes (10/pk))



Part No.	Joint Size	Quantity	Price
SLV-007	7 / 25	10/pk	\$ 15
SLV-010	10 / 30	10/pk	\$ 15
SLV-012	12 / 30	10/pk	\$ 15
SLV-014-X	14 / 20	10/pk	\$ 15
SLV-014	14 / 35	10/pk	\$ 15
SLV-019-X	19 / 22	10/pk	\$ 15
SLV-019	19 / 38	10/pk	\$ 15
SLV-024	24 / 40	10/pk	\$ 15
SLV-029	29 / 42	10/pk	\$ 15
SLV-034	34 / 45	10/pk	\$ 15
SLV-040	40 / 50	10/pk	\$ 20
SLV-045	45 / 50	10/pk	\$ 20
SLV-050	50 / 50	10/pk	\$ 25
SLV-055	55 / 50	10/pk	\$ 30
SLV-060	60 / 50	10/pk	\$ 30
SLV-070	71 / 60	10/pk	\$ 40

### Rigid PTFE Sleeves for Glass Joints (A' Length Cone - USA-sizes each)

Part No.	Joint Size	Quantity	Price (ea)
SLR-110	10 / 30		\$ 10
SLR-114-X	14 / 20		\$ 10
SLR-114	14 / 35		\$ 10
SLR-119-X	19 / 22		\$ 10
SLR-119	19 / 38		\$ 10
SLR-124	24 / 40		\$ 10
SLR-129	29 / 42		\$ 15
SLR-134	34 / 45		\$ 15
SLR-145	45 / 50		\$ 25
SLR-155	55 / 50		\$ 30



### Rigid PTFE Adapters for Glass Joints (A' Length Cone - USA-sizes each)

Part No.	Socket	Cone	Quantity	Price (ea)
SLA-1014	10 / 30	14 / 35		\$ 10
SLA-1019	10 / 30	19 / 38		\$ 10
SLA-1419	14 / 35	19 / 38		\$ 10
SLA-1424	14 / 35	24 / 40		\$ 15
SLA-1924	19 / 38	24 / 40		\$ 15
SLA-1929	19 / 38	29 / 42		\$ 15
SLA-1934	19 / 38	34 / 45		\$ 20
SLA-2429	24 / 40	29 / 42		\$ 20
SLA-2434	24 / 40	34 / 45		\$ 20
SLA-2934	29 / 42	34 / 45		\$ 20

### PTFE Bottle Pourer

Part No.	Neck (mm)	Quantity	Price
TBP-30	30	1	\$40
TBP-32	32	1	\$40
TBP-38	38	1	\$40
TBP-45	45	1	\$40



### PFA Inert Fluoropolymer BEAKERS

Part No.	Description	Quantity	Price
TB-2	PFA Low Form Inert Fluoropolymer Beaker - 2ml	1	\$15.00
TB-50	PFA Low Form Inert Fluoropolymer Beaker - 50ml	1	\$25.00
TB-125	PFA Low Form Inert Fluoropolymer Beaker - 125ml	1	\$35.00
TB-250	PFA Low Form Inert Fluoropolymer Beaker - 250ml	1	\$55.00
TB-500	PFA Low Form Inert Fluoropolymer Beaker - 500ml	1	\$75.00
TB-set	PFA Low Form Inert Fluoropolymer Beaker - set of 5, one of each above	1 set	\$165.00



NOTE: Find more PTFE beakers on page 4.

# Petri Dishes



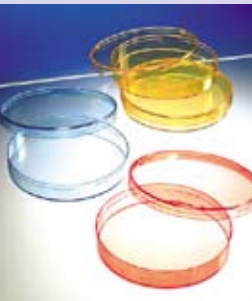
## PFA Inert Fluoropolymer Petri Dishes

Part No.	Description	Quantity	Price per Case
PD-50	PETRI DISH, PFA, 50mm, no vent, stackable each dish becomes a lid for the dish below it	case of 10	\$120.00
PD-100	PETRI DISH, PFA, 100mm, no vent, stackable each dish becomes a lid for the dish below it	case of 10	\$250.00



## Sterile Petri Dishes - Polystyrene

Part No.	Description	Quantity	Price per Case
PS-01	PETRI DISHES 90 MM NO VENT	case of 500	\$69.00
PS-02	PETRI DISHES 90 MM SINGLE VENT	case of 500	\$90.00
PS-03	PETRI DISHES 90 MM TRIPLE VENT	case of 500	\$90.00
PS-07	PETRI DISH 50 MM SINGLE VENT	case of 500	\$135.00
PS-04	PETRI DISHES AMBER 90 MM	case of 500	\$95.00
PS-05	PETRI DISHES BLUE 90 MM	case of 500	\$95.00
PS-06	PETRI DISHES RED 90 MM	case of 500	\$95.00



ScienceGear Discount Supplies

# Order Information

**You may place your order in one of the following ways:**

- a) Call 704-992-6521 and place your purchase order verbally with one of our sales representatives.
- b) Fax your purchase order on company letterhead to: 800-747-7486.
- c) Order over the Internet using our Secure Server Order Form ([www.ScienceGear.com](http://www.ScienceGear.com)).

**MINIMUM ORDER - \$50**

**Note: Shipping is not included in list prices.**

## Method of Payment

a) For customers demonstrating established credit history, we will accept firm purchase orders before payment is required. We will invoice after shipment is made. You may make payment via company check after you receive your shipment and invoice. In general, we require purchase orders be placed via fax on company letterhead - but we will waive this requirement in special cases as we judge necessary.

We reserve the right to request complete trade references before accepting any purchase order.

In some special cases, we reserve the right to require full or partial payment upfront before merchandise will be delivered.

b) We accept Visa, MasterCard & Amex cards. For your protection, we request that you only send credit card information to us via our Secure Server Order Form.

Thank you for ordering from Big Science Inc. & ScienceGear.com!

We look forward to having you as a new customer!



**Big Science Inc.**

P.O. Box 995

Huntersville, NC 28070-0995

phone: 704-992-6521 • fax: 800-747-7486

email: [sales@sciencegear.com](mailto:sales@sciencegear.com)

